

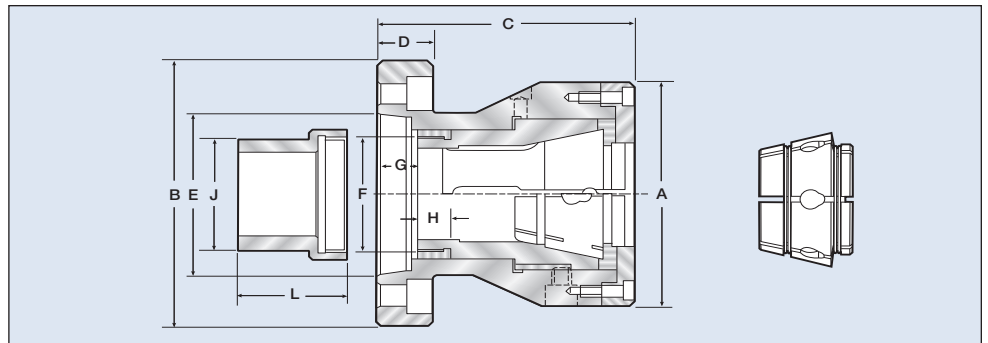


Uses Standard Multibore Collets see page 122 or S Type Master Collets

Crawford CDC Standard Length Collet Chucks

Accept Master Collets or Multibore Collets

- ⌚ Ideal for bar work or for second operation work.
- ⌚ Dead Length Operation
- ⌚ Large Capacity- CDC Chucks maximum round 2.625"
- ⌚ CDC Standard Length Chucks use DIN type Multi-Bore Collets for a powerful parallel grip over a wide diameter range. CDC Standard Chucks can also use Master Collets which accept Hardinge Collet Pads.
- ⌚ Collets are available for Round, Hex or Square parts.
- ⌚ Accurate-.0002" TIR from rear mounting register and working collet taper.
- ⌚ Repeatability .0002" on duplicate parts.
- ⌚ 1 Year Warranty
- ⌚ Available in A type and DIN 55026 mountings



CDC Series for Multibore Crawford Standard type Collets & Master Collets

Chuck Type	CDC-42	CDC-54	CDC-66
Mount	140 x 6	170 x 6	220 x 6
Maximum RPM	6000	5000	4500
Multibore Collet	W-850	V-120	T-285
Capacity Round (mm/in)	42/1.65	60/2.36	80/3.14
Capacity Hex (mm/in)	36/1.41	52/2.04	68/2.67
Capacity Square (mm/in)	30/1.18	42/1.65	56//2.12
Master Spring Collet	S10	S16	S20
Capacity Round (mm/in)	25/1	41/1.625	50/2
Capacity Hex (mm/in)	21/.859	35/1.4	43/1.718
Capacity Square (mm/in)	17/.703	29/1.07	35/1.406
A (mm/in)	116/4.57	142/5.59	168/6.61
B (mm/in)	160/6.30	200/7.87	250/9.84
C (mm/in)	118.5/4.67	146.5/5.77	160/6.30
D (mm/in)	25/.98	30/1.18	35/1.37
E (mm/in)	140/5.512	170/6.692	220/8.66
F	M58 x 1.5	M76 x 1.5	M90 x 2.0
G (mm/in)	13/.51 - 22/.86	18/.71 - 28/1.10	21/.82 - 31/1.22
H (mm/in)	15/.59	15/.59	20/.79
J (mm/in)	65/2.56	83/3.27	96/3.78
L (mm/in)	80/3.15	80/3.15	115/4.52
Drawbar Force (lb/f)	5,390	8,530	8,542
Clamping Force (lb/f)	13,200	22,100	22,480
Aprox. Chuck Weight	28 lbs	39 lbs	49 lbs
Chuck Order No.	J-491	J-492	J-493