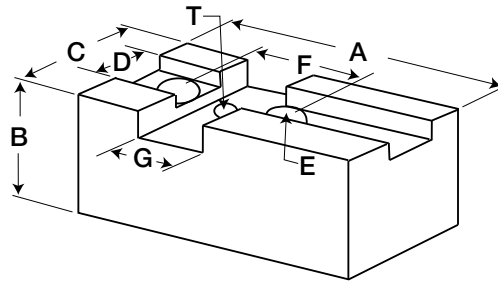




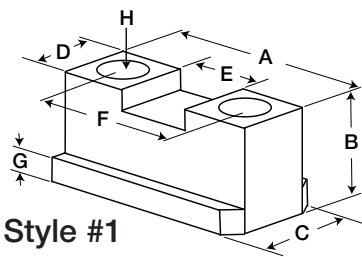
# Atlas Workholding Top Tooling Square Serrations

For: Pratt Burnerd, S.P., Cushman, Logansport and others

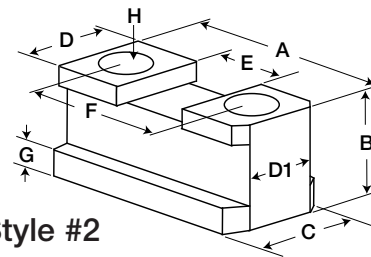


## Soft Jaws

Chuck Size	Part Number	Length A	Height B	Width C	Tongue D	Bolt Size E	Hole Spacing F	Key Slot G
8"	8140-21527	3.0"	2.0"	1.25"	.5"	3/8"	1.437"	.745"
10"-12"	8140-26527	4.37"	2.5"	1.75"	.75"	1/2"	1.75"	.994"
15"-18"	8140-38527	5.0"	3.0"	2.0"	1.0"	3/4"	2.5"	1.488"



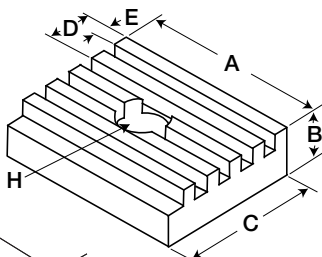
Style #1



Style #2

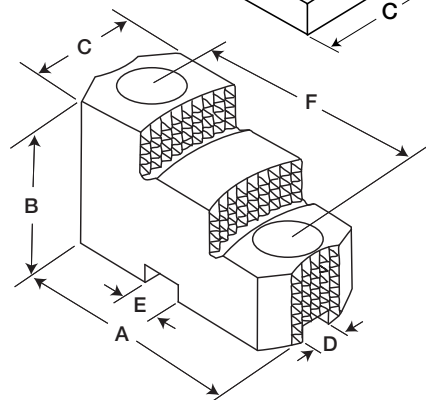
## T-Nuts

Chuck Size	Part Number	Style Number	Length A	Height B	Width C	Neck D	Bolt Neck D1	Cross Size H	Bolt Slot E	Spacing F	Shoulder G
8"	8130-21528	1	2.12"	.99"	.87"	.49"	-	3/8"-16	.875"	1.44"	.31"
10"	8130-26528	2	2.5"	1.13"	.86"	.74"	.61"	1/2"-13	1.063"	1.75"	.40"
10"-12"	8130-25528	1	2.44"	1.0"	1.0"	.74"	-	1/2"-13	1.063"	1.75"	.37"
12"	8130-31528	2	2.5"	.98"	1.02"	.74"	.61"	5/8"-11	1.063"	1.75"	.35"
15"-18"	8130-40528	1	3.75"	1.25"	1.25"	1.0"	-	3/4"-10	1.563"	2.5"	.43"



## Keys

Chuck Size	Part Number	A	Length B	Height C	Width D	E	Bolt Size H
8"	2179-00856	1.31"	.37"	.744"	.2"	.098"	1/4"-20
10"-12"	2179-01056	1.68"	.5"	.993"	.25"	.124"	5/16"-18
15"-18"-21"	8130-40529	2.75"	.5"	1.487"	.25"	.124"	3/8"-16



## Hard Top Jaws

Chuck Size	Part Number	Length A	Height B	Width C	Tongue D	Key Slot E	Hole Spacing F	Bolt Size
10"-12"	8130-26327	4.87"	2.5"	1.75"	.75"	.994"	1.75"	1/2"
15"-18"	8130-38327	5.5"	3.5"	2.25"	1.0"	1.488"	2.5"	3/4"