



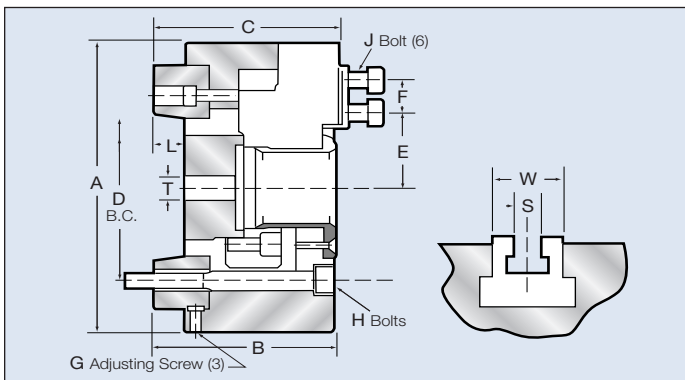
Pratt Burnerd "King Bore" Setrite® Power Chucks

Sizes 6 thru 10 inch

- ⌚ One Year Warranty
- ⌚ Repeatability ± .0005"
- ⌚ .005" Adjustable Setrite® feature in the chuck body on sizes up to 15" allow you to true up to virtually zero; saves time and extends top jaw life.
- ⌚ High Speed - up to 5000 rpm
- ⌚ Extra large Thru-Hole for bar work, supplied with cover plate for closed center.
- ⌚ Utilize the machine's existing actuating cylinder... including short stroke Japanese types.
- ⌚ 1.5mm x 60° or 1/16 x 90° fine serrations on sizes 6" thru 10".
- ⌚ Steel Body
- ⌚ Easily removable blank wedge sleeve in the chuck allows customer to bore and thread the sleeve of the chuck to the existing drawtube or bar. PBA can supply pre-threaded sleeve at nominal charge.
- ⌚ 3-Jaw sizes available: 6", 8", 10".

Chuck Size	Mount (D)Direct (I)Indirect	RPM	Model No.	Jaw Stroke	Sleeve Stroke	Bore Size	Bar Capacity	Master Jaw Type	Operating Force lbs/f	Grip Force lbs/f	Wt (lbs)
6.5"	A2-4(I)	5500	9829-17010	.170"	.630"	2.05"	2.0"	1.5mm x 60°	6,000	13,200	25
6.5"	A2-5(D)	5500	9827-18100	.170"	.630"	2.05"	2.0"	1.5mm x 60°	6,000	13,200	25
8.25"	A2-5(I)	5000	9821-32223	.170"	.630"	2.54"	2.5"	1.5mm x 60°	9,100	20,000	40
8.25"	A2-6(D)	5000	9827-22000	.170"	.630"	2.54"	2.5"	1.5mm x 60°	9,100	20,000	40
8.25"	A2-8(I)	5000	9821-52223	.170"	.630"	2.54"	2.5"	1.5mm x 60°	9,100	20,000	40
10.0"	A2-6(I)	4000	9821-42723	.190"	.730"	3.03"	3.0"	1.5mm x 60°	11,500	25,800	60
10.0"	A2-8(D)	4000	9827-27010	.190"	.730"	3.03"	3.0"	1.5mm x 60°	11,500	25,800	60

Dimensional and Performance Data (in inch)



Chuck Size	A	B	C	D	F	E*		G	H**	J	L		T	S	W
						Max	Min				Min	Max			
6-A4	6.7	3.661	3.780	3.250	.787	2.22	1.75	5/16 UNFx1/2	M10x25(6)	M10	.28	.91	M60	.475	1.22
6-A5	6.7	3.661	3.780	4.125	.787	2.22	1.75	5/16 UNFx1/2	M10x100(3)	M10	.28	.91	M60	.475	1.22
8-A5	8.27	3.661	3.819	4.125	.984	2.64	2.30	3/8 UNFx3/4	M10x25(6)	M12	-.24	.39	M70	.551	1.22
8-A6	8.27	3.661	3.819	4.188	.984	2.64	2.30	3/8 UNFx3/4	M12x100(3)	M12	-.24	.39	M70	.551	1.22
8-A8	8.27	3.661	3.819	5.250	.984	2.64	2.30	3/8 UNFx3/4	M16x25(6)	M14	-.24	.39	M70	.551	1.22
10-A6	10.43	4.272	4.429	5.250	1.181	3.48	2.58	1/2 UNFx3/4	M12x25(6)	M12	-.25	.48	M80	.630	1.57
10-A8	10.43	4.232	4.390	6.750	1.181	3.48	2.58	1/2 UNFx3/4	M16x110(3)	M12	-.29	.44	M80	.630	1.57

(T) Draw Tube Thread Blank

*With T-nut as shown in forward position with chuck jaws in midstroke. **UNC mounting bolts available.