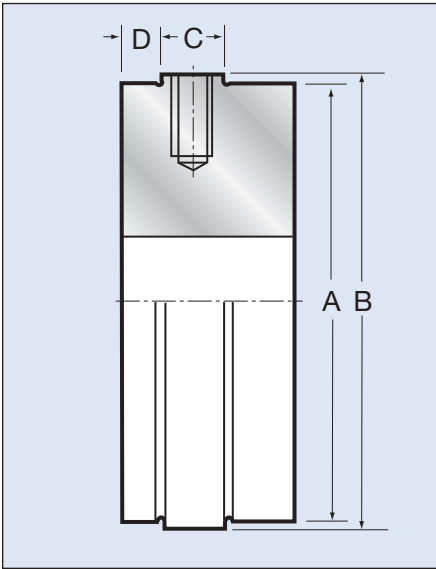




# Atlas Workholding C Style Jaw Pads

For Atlas Rotary Power and Stationary Chucks



Model	A	B	C	D	Mounting Mount	Suitable
C-25	45mm 1.77"	47.5mm 1.87"	3.5mm 0.14"	7mm 0.28"	M5x3	JAS-25, JHS-25
C-40	65mm 2.56"	67.5mm 2.66"	6mm 0.24"	9mm 0.35"	M6x3	JA7-40, JH7-40, JAS-40 JHS-40, CAF-40
C-70	105mm 4.13"	107.5mm 4.23"	6mm 0.24"	9mm 0.35"	M6x3	JA7-70, JH7-70, JAS-70 CAF-70
C-120	140mm 1.77"	143.5mm 1.87"	6mm 0.14"	9mm 0.28"	M6x4	JH9-120



Collet Pad	Segments	Bore Min.	Bore Max.	Regular Pad Height	Max. Pad Height
C-25	3	5mm/.1968"	25mm/.9842"	20mm/.7874"	40mm/1.5748"
C-40	3	5mm/.1968"	44mm/1.733"	26mm/1.0236"	50mm/1.968"
C-70	3	5mm/.1968"	68mm/2.677"	26mm/1.0236"	50mm/1.968"
C-122	4	10mm/.3937"	118mm/4.645"	32mm/1.2598"	50mm/1.968"



## Pratt Burnerd Chuck Lubricant

for Manual and Power Chucks

This is a specially formulated high pressure Chuck Lubricant and is the recommended lubricant to be used in all Pratt Burnerd Chuck that require grease type lubrication.

**Features:**

- ⊕ Dramatically improves Chuck jaw forces over conventional lubricants, withstands pressure up to 500,000 pounds per square inch.
- ⊕ Rust and oxidation inhibitors
- ⊕ Tacky nature gives high resistance to centrifugal force.
- ⊕ Contains molybdenum disulfide to reduce seizing, fretting wear galling and lower friction under conditions of extreme pressure.
- ⊕ Help reduce maintenance costs.
- ⊕ An effective lubricant for all brands of chucks

**Ordering Information:**

Order No.	Description
PB16OZ	16 oz (453.6 gms) tube
PB10LB	10 lb (4.5 kilo) pail