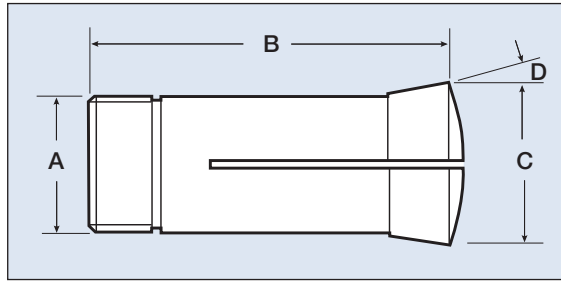




Crawford 5C Collets (Metric)



Dimensions

A	B	C	D
31.75	85.4	37.3	10°

Size	Part Number
1.0mm	0123-R-1.0mm
1.5mm	0123-R-1.5mm
2.0mm	0123-R-2.0mm
2.5mm	0123-R-2.5mm
3.0mm	0123-R-3.0mm
3.5mm	0123-R-3.5mm
4.0mm	0123-R-4.0mm
4.5mm	0123-R-4.5mm
5.0mm	0123-R-5.0mm
5.5mm	0123-R-5.5mm
6.0mm	0123-R-6.0mm
6.5mm	0123-R-6.5mm
7.0mm	0123-R-7.0mm
7.5mm	0123-R-7.5mm
8.0mm	0123-R-8.0mm
8.5mm	0123-R-8.5mm
9.0mm	0123-R-9.0mm
9.5mm	0123-R-9.5mm
10.0mm	0123-R-10.0mm
10.5mm	0123-R-10.5mm
11.0mm	0123-R-11.0mm
11.5mm	0123-R-11.5mm
12.0mm	0123-R-12.0mm
12.5mm	0123-R-12.5mm
13.0mm	0123-R-13.0mm
13.5mm	0123-R-13.5mm
14.0mm	0123-R-14.0mm
14.5mm	0123-R-14.5mm
15.0mm	0123-R-15.0mm
15.5mm	0123-R-15.5mm
16.0mm	0123-R-16.0mm
16.5mm	0123-R-16.5mm
17.0mm	0123-R-17.0mm
17.5mm	0123-R-17.5mm
18.0mm	0123-R-18.0mm
18.5mm	0123-R-18.5mm
19.0mm	0123-R-19.0mm
19.5mm	0123-R-19.5mm

Size	Part Number
20.0mm	0123-R-20.0mm
20.5mm	0123-R-20.5mm
21.0mm	0123-R-21.0mm
21.5mm	0123-R-21.5mm
22.0mm	0123-R-22.0mm
22.5mm	0123-R-22.5mm
23.0mm	0123-R-23.0mm
23.5mm	0123-R-23.5mm
24.0mm	0123-R-24.0mm
24.5mm	0123-R-24.5mm
25.0mm	0123-R-25.0mm
25.5mm	0123-R-25.5mm
26.0mm	0123-R-26.0mm
26.5mm	0123-R-26.5mm
27.0mm	0123-R-27.0mm

5C Round Collet Sets (Metric)

Set	No. of Collets	Part No.
3mm-27mm x 0.5mm	49	0123-SET-1
3mm-27mm x 1mm	25	0123-SET-2



See page 124 for Accuracy Chart