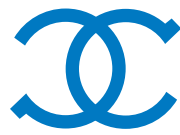




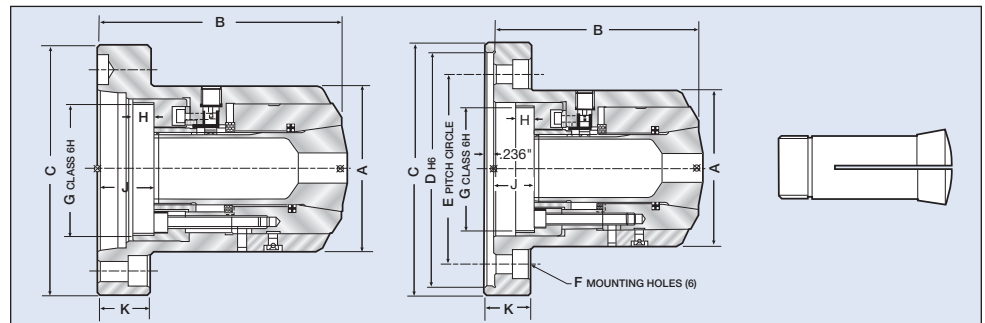
U.S. Patent No. 5,524,909



Crawford 5C & 16C Dead-Length Power Chucks

A Type and DIN 6353 Straight Recess Mount

- ⌚ Short overall length excellent for main or sub-spindle applications.
- ⌚ Chuck accuracy is .0002" TIR from rear mounting register and working collet taper.
- ⌚ Repeatability is .0002" TIR
- ⌚ Hardened and ground main body and cone
- ⌚ Dead Length feature eliminates part pullback
- ⌚ High speed up to 7000 rpm
- ⌚ Straight recess or available with A type mountings. Other mounting types available on request
- ⌚ In second operations work, shoulder components can be stopped against the face of the collet
- ⌚ Both collet types are internally threaded in the rear end to house either a backstop or ejector if required
- ⌚ Drawback Spring Collets achieve the highest possible concentric accuracy



5C & 16C Series for 5C & 16C Standard type Collets

Chuck Type	5C	5C	16C	16C	5C	16C
Mount	A2-5	A2-6	A2-6	A2-8	140 x 6	170 x 6
Collet Type	5C-0123	5C-0123	16C-G119	16C-G119	5C-123	16C-G119
Capacity Round (mm/in)	27/1.125	27/1.125	42/1.625	42/1.625	27/1.125	42/1.625
Capacity Hex (in)	.875	.875	1.375	1.375	.875	1.375
Capacity Square (in)	.750	.750	1.000	1.000	.750	1.000
A (mm/in)	85/3.34	85/3.34	110/4.33	110/4.33	85/3.34	110/4.33
B (mm/in)	117/4.60	117/4.60	144/5.67	161/6.34	117/4.60	144/5.67
C (mm/in)	135/5.31	165/6.49	165/6.49	220/8.66	160/6.30	200/7.87
D (mm/in)	-	-	-	-	140/5.51	170/6.69
E (mm/in)	-	-	-	-	104.8/4.126	133.4/5.252
F	-	-	-	-	M10	M12
G thread	M68 x 1.5	M68 x 1.5	M88 x 1.5	M88 x 1.5	M68 x 1.5	M88 x 1.5
J (mm/in)	34/2.33 -31/1.26	34/2.33 -31/1.26	34/1.33 -30/1.18	34/1.33 -30/1.18	34/2.33 -31/1.26	34/1.33 -30/1.18
K (mm/in)	25/.98	30/1.18	30/1.18	30/1.18	30/1.18	30/1.18
Maximum RPM	6000	6000	6000	4500	6000	4500
Drawbar Force (lb/f)	4,046	4,046	5,392	5,392	4,046	5,392
Clamping Force (lb/f)	12,500	12,500	17,000	17,000	12,500	17,000
Chuck Weight	10.6 lbs	13 lbs	20.5 lbs	26 lbs	12.3 lbs	23.6 lbs
Chuck Order No.	D-956	C-336	C-170	C-340	C-338	C-342