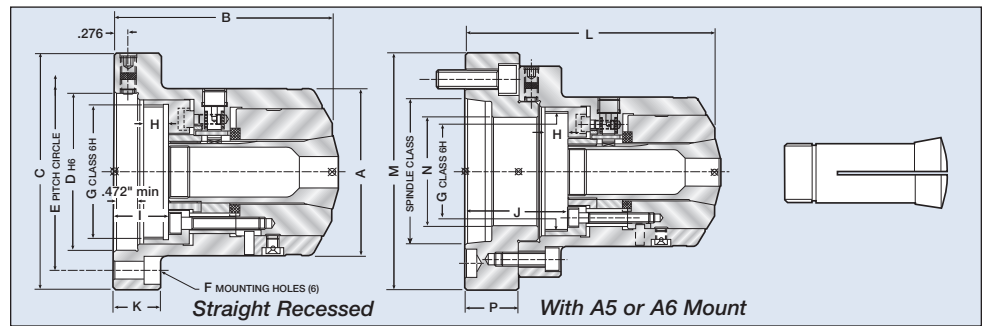




# Crawford 5C & 16C Dead-Length Power Chuck

with Setrite® Adjustment Feature or for A Type Mounting and DIN 6353 Straight Recess

- ⚙ Super Accurate with Setrite® Adjustment feature allows accuracy adjustment to virtual zero. The four screw adjustment feature allows you to eliminate any error in the Collet.
- ⚙ Chuck accuracy is .0002" TIR from rear mounting register and working collet taper. Repeatability is .0002" TIR
- ⚙ Hardened and ground main body and cone
- ⚙ Dead Length feature eliminates part pullback
- ⚙ High speed up to 6000 rpm
- ⚙ Straight recess or available with A type mountings. Other mounting types available on request.



Chuck Type	5C	5C	16C	16C	16C
Mount	A2-5	A2-6	A2-5	A2-6	140 x 6
Collet Type	5C-0123	5C-0123	16C-G119	16C-G119	16C-G119
Capacity Round (mm/in)	27/1.125	27/1.125	42/1.625	42/1.625	42/1.625
Capacity Hex (mm/in)	22/.875	22/.875	35/1.375	35/1.375	35/1.375
Capacity Square (mm/in)	17.8/.70	17.8/.70	29/1.14	29/1.14	29/1.14
A (mm/in)	85/3.34	85/3.34	110/4.31	110/4.31	110/4.31
B (mm/in)	111/4.33	111/4.33	138/5.43	138/5.43	138/5.43
C (mm/in)	120/4.72	120/4.72	155/6.10	155/6.10	155/6.10
D (mm/in)	80/3.15	80/3.15	94/3.70	94/3.70	94/3.70
E (mm/in)	100/3.93	100/3.93	130/5.11	130/5.11	130/5.11
F	M8	M8	M10	M10	M10
G Thread	M68 x 1.5	M68 x 1.5	M88 x 1.5	M88 x 1.5	M88 x 1.5
H (mm/in)	13/.51	13/.51	13/.51	13/.51	13/.51
I (mm/in)	28/1.10-25/.95	28/1.10-25/.95	28/1.10-25/.94	28/1.10-25/.94	28/1.10-25/.94
J (mm/in)	58/2.28-55/2.16	58/2.28-55/2.16	51/2.0-47/1.85	58/2.28-54/2.12	51/2.0-47/1.85
K (mm/in)	24/.94	24/.94	22/.86	22/.86	22/.86
L (mm/in)	141/5.55	141/5.55	161/6.34	168/6.61	161/6.34
M (mm/in)	135/5.31	165/6.49	155/6.10	165/6.49	155/6.10
N (mm/in)	62/2.44	62/2.44	77/3.03	77/3.03	77/3.03
P (mm/in)	30/1.18	30/1.18	23/.91	30/1.18	23/.91
Maximum RPM	6000	6000	6000	6000	6000
Drawbar Force (lb/f)	4,046	4,046	5,392	5,392	5,392
Clamping Force (lb/f)	12,500	12,500	17,000	17,000	17,000
Chuck Wt.	9.3 lbs	9.3 lbs	17.6 lbs	17.6 lbs	17.6 lbs
Chuck Wt. w/Mount	15 lbs	17.8 lbs	23.5 lbs	26 lbs	24.5 lbs
St. Recess Mount					
Chuck Order No.	B-390	B-390	B-685	B-685	B-685
w/Mount Order No.	A-352	A-345	B-649	A-412	A213