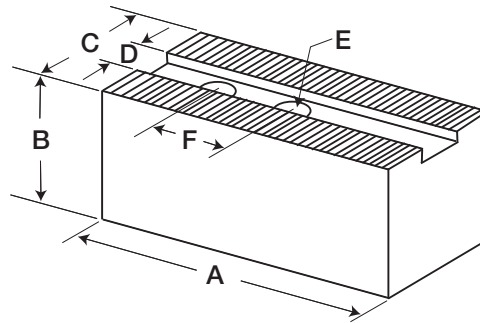




# Atlas Workholding Top Tooling 1/16" x 90° and 3/32" x 90° Serrations

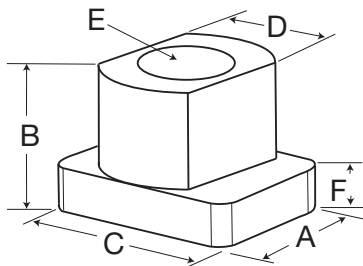
For: Pratt Burnerd and others



## Soft Jaws

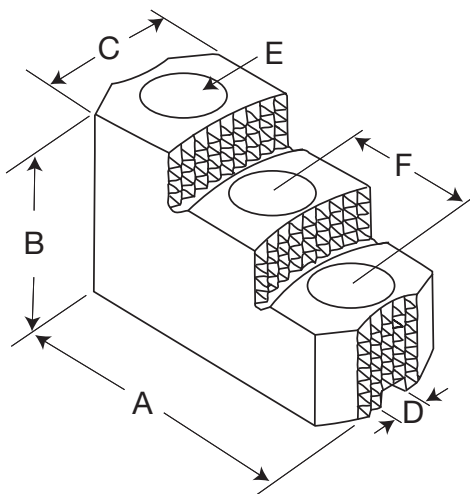
Chuck Size	Part Number	Length A	Height B	Width C	Slot D	Bolt Size E	Hole Spacing F
6"	8140-17512	2.75"	1.5"	1.25"	.475"	M8	.79"
8"	2860-21512	3.5"	2.0"	1.5"	.670"	M12	1.13"
10"	2860-21512	3.5"	2.0"	1.5"	.670"	M12	1.13"
12"	2860-32512	4.5"	2.5"	2.0"	.827"	M16	1.25"
15"&24"*	2860-40512	6.0"	3.0"	2.0"	1.00"	M20	1.56"

\*3/32" x 90° serrations



## T-Nuts 2 required per jaw

Chuck Size	Part Number	Length A	Height B	Width C	Neck D	Bolt Size E	Shoulder
6"	8820-17591	.47"	.82"	.69"	.470"	M8	-
8"	2870-17591	.88"	.91"	.73"	.669"	M12	.35
10"	2870-17591	.88"	.91"	.73"	.669"	M12	.35
12"	2870-26591	1.12"	1.06"	.94"	.826"	M16	.43
15"-24"	2870-40591	1.10"	1.14"	1.42"	.999"	M20	.43



## Hard Stepped Top Jaws

Chuck Size	Part Number	Length A	Height B	Width C	Slot D	Bolt Size E	Bolt Spacing F
6"	8130-17611	2.56"	1.56"	1.18"	.475"	M8	.67"
8"	8130-21611	3.00"	1.97"	1.57"	.670"	M12	.75"
10"	8130-21611	3.00"	1.97"	1.57"	.670"	M12	.75"
12"	8130-31611	4.92"	2.36"	2.36"	.827"	M16	.98"
15"&24"*	8130-40611	4.92"	2.95"	2.36"	1.00"	M20	1.22"

\*3/32" x 90° serrations