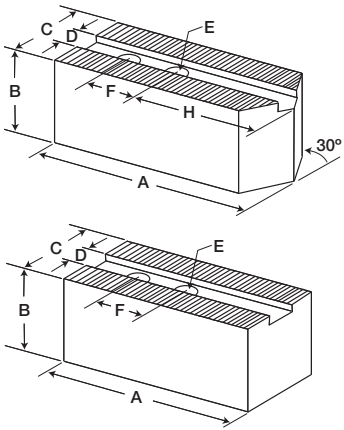




Atlas Workholding Top Tooling 1.5mm x 60° Serrations

For: Pratt Burnerd, Hova, Kitagawa, Matsumoto and others

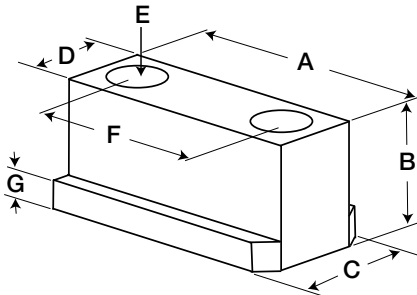
Soft Jaws



Chuck Size	Part Number	Length A	Height B	Width C	Slot D	Bolt Size E	Hole Spacing F	Offset Pointed Part Number	Offset Length A	H	Extra High Part Number	Extra High B Height
6"	8140-17525	3.125"	1.5"	1.25"	.475"	M10	.78"	N/A	-	-	N/A	-
8"	8140-21525	3.5"	2.0"	1.5"	.551"	M12	1.0"	8140-21525OP	4.25"	2.45"	8140-21525EH	3.5"
10"	8140-26525	4.0"	2.0"	1.5"	.630"	M12	1.18"	8140-26525OP	5.0"	3.15"	8140-26525EH	3.5"
12"	8140-31525	5.25"	2.0"	2.0"	.71"	M14	1.18"	8140-31525OP	6.25"	4.15"	8140-31525EH	3.5"
12"	8140-B212	5.5"	2.0"	2.0"	.826"	M16	1.18"	8140-B212OP	6.25"	4.15"	8140-B212EH	3.5"
15" & 18"	8140-40525	6.5"	2.5"	2.5"	.866"	M20	1.69"	8140-40525OP	7.5"	4.41"	8140-40525EH	3.5"
20" x 24"	8140-50525	7.0"	2.5"	2.5"	.984"	M20	2.36"	8140-50525OP	8.0"	-	8140-50525EH	3.5"

* 6" Jaw Part No. 8140-17525 Comes Standard as Offset Pointed

** 20" & 24" Jaws have 3mm x 60° Serrations

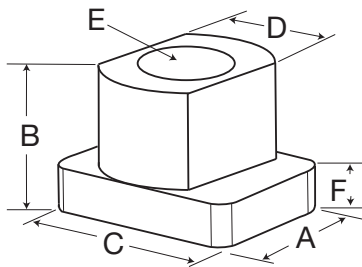


T-Nuts: for Atlas ATL Series and Kitagawa Chucks

Chuck Size	Part Number	Length A	Height B	Width C	Neck D	Bolt Size E	Hole Spacing F	Shoulder G
6"	8130-B206	1.58"	.728"	.708"	.472"	M10	20mm	.295"
8"	8130-B208	1.77"	.807"	.787"	.551"	M12	25mm	.335"
10"	8130-B210	2.08"	.846"	.866"	.630"	M12	30mm	.335"
12"*	8130-B212	2.28"	1.100"	1.181"	.826"	M16	30mm	.453"
12"**	8130-B12	2.16"	1.319"	.984"	.708"	M14	30mm	.531"

* .826 Neck fits Kitagawa B, BT, and BL series

** .708 Neck fits Kitagawa N, HOH and NLT series



T-Nuts: for PBA Constant Grip, Quick Change Jaw Chucks and PBA Setrite Power Chucks (Split type) 2 required per jaw

Chuck Size	Part Number	Length A	Height B	Width C	Neck D	Bolt Size E	Shoulder F
6"	8130-17590	.64"	.82"	.69"	.472"	M10	.30"
8"	8130-21590	.74"	.98"	.87"	.550"	M12	.37"
10"	8130-26590	.74"	1.0"	.91"	.627"	M12	.34"
12"	8130-31590	.97"	1.3"	1.03"	.707"	M14	.53"
15"-18"	8130-40590	.97"	1.75"	1.32"	.864"	M20	.62"
20" & Up	8130-50590	1.2"	1.47"	1.32"	.980"	M20	.43"

*Hard Top Jaws: for PBA, Kitagawa and others (Split T-Nut Req'd)

Chuck Size	Part Number	Length A	Height B	Width C	Slot D	Bolt Size E	Bolt Spacing F
6"	8130-17624	2.56"	1.57"	1.18"	.475"	M10	.669"
8"	8130-21624	2.95"	1.96"	1.57"	.551"	M12	.748"
10"	8130-26624	2.95"	1.96"	1.57"	.63"	M12	.748"
12"	8130-31624	4.52"	2.36"	1.96"	.71"	M14	.948"
15" & 18"	8130-40624	4.92"	2.95"	2.36"	.866"	M20	.948"
20" & Up	8130-50624	6"	2.95"	2.36"	.984"	M20	2.36"

* Some manufacturers' "F" dimension may vary. It may be necessary to buy split T-nuts or split existing nuts

