



# Atlas Workholding Closed Center Rotating Hydraulic Cylinder

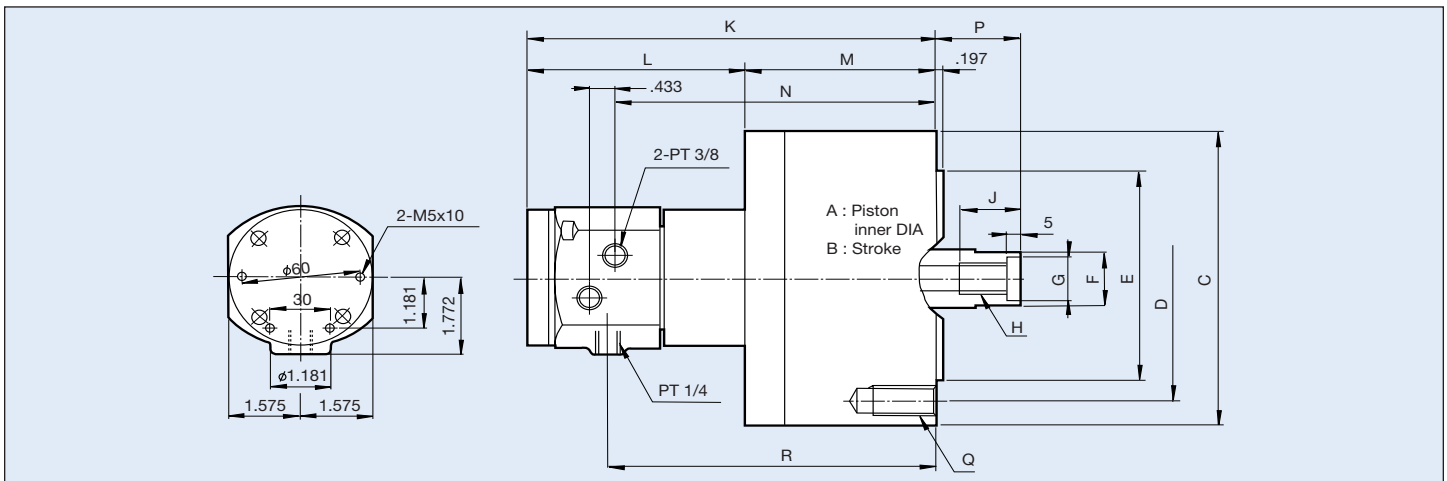
## RCV With Safety Device/Optional Stroke Sensing

- ⊕ High speed closed center hydraulic cylinder.
- ⊕ This can be installed in both horizontal and vertical applications.
- ⊕ Equipped with safety check valves, preventing loss of grip if power supply is interrupted.
- ⊕ Available with stroke sensing

Model No.*	Piston Area (Sq. in.)		Piston Stroke	Max Speed RPM	Draw Bar Pull lb/f	Max Pressure PSI	Drain gal/min	Wt lbs
	Push	Pull						
RCV75	6.83"	5.73"	.591"	6000	3,325	580	.2	9
RCV100	13.33"	12.24"	.787"	6000	7,100	580	.2	16
RCV125	18.91"	17.52"	.984"	6000	10,160	580	.2	22
RCV150	27.28"	24.80"	1.181"	5500	14,385	580	.2	30
RCV200	48.67"	44.95"	1.378"	5500	26,100	580	.2	49
RCV250	67.30"	70.80"	2.360"	2000	63,720	900	.2	193

\* For stroke sensing add RE to the end of the part number (Example RCV150RE)

### Dimensional Data



Model No.	A	B	C	D	E	F	G	H	J	K	L	M	N	P		Q	R
														Max	Min		
RCV75	2.953"	.591"	4.094"	3.543"	2.559"	1.181"	.827"	M20x2.5	1.378"	6.772"	4.173"	2.598"	5.000"	1.811"	1.220"	6-M6x20	5.236"
RCV100	4.134"	.787"	5.345"	3.937"	3.150"	1.181"	.827"	M20x2.5	1.378"	7.756"	4.252"	3.504"	5.984"	1.772"	.984"	6-M10x20	6.220"
RCV125	4.921"	.984"	6.299"	5.118"	4.331"	1.378"	.984"	M24x3.0	1.732"	8.071"	4.252"	3.819"	6.299"	2.008"	1.024"	6-M12x24	6.535"
RCV150	5.906"	1.181"	7.480"	5.118"	4.331"	1.772"	1.220"	M30x3.5	1.772"	8.425"	4.252"	4.173"	6.654"	2.005"	1.024"	6-M12x24	6.890"
RCV200	7.874"	1.378"	9.646"	5.709"	4.724"	2.165"	1.457"	M36x4.0	2.362"	8.976"	4.173"	4.803"	2.205"	2.717"	1.339"	12-M16x30	7.441"
RCV250	9.842"	1.968"	11.810"	10.827"	6.298"	2.559"	1.732"	M42x3.0P	2.165"	12.400"	4.921"	7.283"	9.720"	2.953"	.590"	6-M16x190	10.000"

HOW TO ORDER: State quantity, Model Number of chuck and shipping instructions.