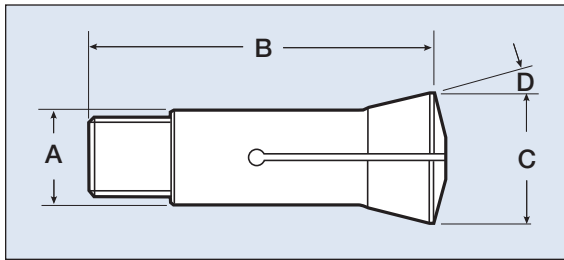




# Crawford 16C Collets (Metric)



Dimensions

A	B	C	D
48	110.5	57.5	10°

Size	16C metric		
	Round	Hex	Square
1.0mm	G119-R-1.0mm	-	-
1.5mm	G119-R-1.5mm	-	-
2.0mm	G119-R-2.0mm	-	-
2.5mm	G119-R-2.5mm	-	-
3.0mm	G119-R-3.0mm	-	-
3.5mm	G119-R-3.5mm	-	-
4.0mm	G119-R-4.0mm	-	-
4.5mm	G119-R-4.5mm	-	-
5.0mm	G119-R-5.0mm	-	-
5.5mm	G119-R-5.5mm	-	-
6.0mm	G119-R-6.0mm	G119-X-6.0mm	G119-S-6.0mm
6.5mm	G119-R-6.5mm	G119-X-6.5mm	G119-S-6.5mm
7.0mm	G119-R-7.0mm	G119-X-7.0mm	G119-S-7.0mm
7.5mm	G119-R-7.5mm	G119-X-7.5mm	G119-S-7.5mm
8.0mm	G119-R-8.0mm	G119-X-8.0mm	G119-S-8.0mm
8.5mm	G119-R-8.5mm	G119-X-8.5mm	G119-S-8.5mm
9.0mm	G119-R-9.0mm	G119-X-9.0mm	G119-S-9.0mm
9.5mm	G119-R-9.5mm	G119-X-9.5mm	G119-S-9.5mm
10.0mm	G119-R-10.0mm	G119-X-10.0mm	G119-S-10.0mm
10.5mm	G119-R-10.5mm	G119-X-10.5mm	G119-S-10.5mm
11.0mm	G119-R-11.0mm	G119-X-11.0mm	G119-S-11.0mm
11.5mm	G119-R-11.5mm	G119-X-11.5mm	G119-S-11.5mm
12.0mm	G119-R-12.0mm	G119-X-12.0mm	G119-S-12.0mm
12.5mm	G119-R-12.5mm	G119-X-12.5mm	G119-S-12.5mm
13.0mm	G119-R-13.0mm	G119-X-13.0mm	G119-S-13.0mm
13.5mm	G119-R-13.5mm	G119-X-13.5mm	G119-S-13.5mm
14.0mm	G119-R-14.0mm	G119-X-14.0mm	G119-S-14.0mm
14.5mm	G119-R-14.5mm	G119-X-14.5mm	G119-S-14.5mm
15.0mm	G119-R-15.0mm	G119-X-15.0mm	G119-S-15.0mm
15.5mm	G119-R-15.5mm	G119-X-15.5mm	G119-S-15.5mm
16.0mm	G119-R-16.0mm	G119-X-16.0mm	G119-S-16.0mm
16.5mm	G119-R-16.5mm	G119-X-16.5mm	G119-S-16.5mm
17.0mm	G119-R-17.0mm	G119-X-17.0mm	G119-S-17.0mm
17.5mm	G119-R-17.5mm	G119-X-17.5mm	G119-S-17.5mm
18.0mm	G119-R-18.0mm	G119-X-18.0mm	G119-S-18.0mm
18.5mm	G119-R-18.5mm	G119-X-18.5mm	G119-S-18.5mm
19.0mm	G119-R-19.0mm	G119-X-19.0mm	G119-S-19.0mm
19.5mm	G119-R-19.5mm	G119-X-19.5mm	G119-S-19.5mm
20.0mm	G119-R-20.0mm	G119-X-20.0mm	G119-S-20.0mm
20.5mm	G119-R-20.5mm	G119-X-20.5mm	G119-S-20.5mm
21.0mm	G119-R-21.0mm	G119-X-21.0mm	G119-S-21.0mm
21.5mm	G119-R-21.5mm	G119-X-21.5mm	G119-S-21.5mm

Size	16C metric		
	Round	Hex	Square
22.0mm	G119-R-22.0mm	G119-X-22.0mm	G119-S-22.0mm
22.5mm	G119-R-22.5mm	G119-X-22.5mm	G119-S-22.5mm
23.0mm	G119-R-23.0mm	G119-X-23.0mm	G119-S-23.0mm
23.5mm	G119-R-23.5mm	G119-X-23.5mm	G119-S-23.5mm
24.0mm	G119-R-24.0mm	G119-X-24.0mm	G119-S-24.0mm
24.5mm	G119-R-24.5mm	G119-X-24.5mm	G119-S-24.5mm
25.0mm	G119-R-25.0mm	G119-X-25.0mm	G119-S-25.0mm
25.5mm	G119-R-25.5mm	G119-X-25.5mm	-
26.0mm	G119-R-26.0mm	G119-X-26.0mm	-
26.5mm	G119-R-26.5mm	G119-X-26.5mm	-
27.0mm	G119-R-27.0mm	G119-X-27.0mm	-
27.5mm	G119-R-27.5mm	G119-X-27.5mm	-
28.0mm	G119-R-28.0mm	G119-X-28.0mm	-
28.5mm	G119-R-28.5mm	G119-X-28.5mm	-
29.0mm	G119-R-29.0mm	G119-X-29.0mm	-
29.5mm	G119-R-29.5mm	G119-X-29.5mm	-
30.0mm	G119-R-30.0mm	G119-X-30.0mm	-
30.5mm	G119-R-30.5mm	G119-X-30.5mm	-
31.0mm	G119-R-31.0mm	G119-X-31.0mm	-
31.5mm	G119-R-31.5mm	G119-X-31.5mm	-
32.0mm	G119-R-32.0mm	G119-X-32.0mm	-
32.5mm	G119-R-32.5mm	G119-X-32.5mm	-
33.0mm	G119-R-33.0mm	G119-X-33.0mm	-
33.5mm	G119-R-33.5mm	G119-X-33.5mm	-
34.0mm	G119-R-34.0mm	G119-X-34.0mm	-
34.5mm	G119-R-34.5mm	G119-X-34.5mm	-
35.0mm	G119-R-35.0mm	G119-X-35.0mm	-
35.5mm	G119-R-35.5mm	-	-
36.0mm	G119-R-36.0mm	-	-
36.5mm	G119-R-36.5mm	-	-
37.0mm	G119-R-37.0mm	-	-
37.5mm	G119-R-37.5mm	-	-
38.0mm	G119-R-38.0mm	-	-
38.5mm	G119-R-38.5mm	-	-
39.0mm	G119-R-39.0mm	-	-
39.5mm	G119-R-39.5mm	-	-
40.0mm	G119-R-40.0mm	-	-
40.5mm	G119-R-40.5mm	-	-
41.0mm	G119-R-41.0mm	-	-
41.5mm	G119-R-41.5mm	-	-
42.0mm	G119-R-42.0mm	-	-
42.5mm	G119-R-42.5mm	-	-

See page 124 for Accuracy Chart

Emergency Collet P/N G444