

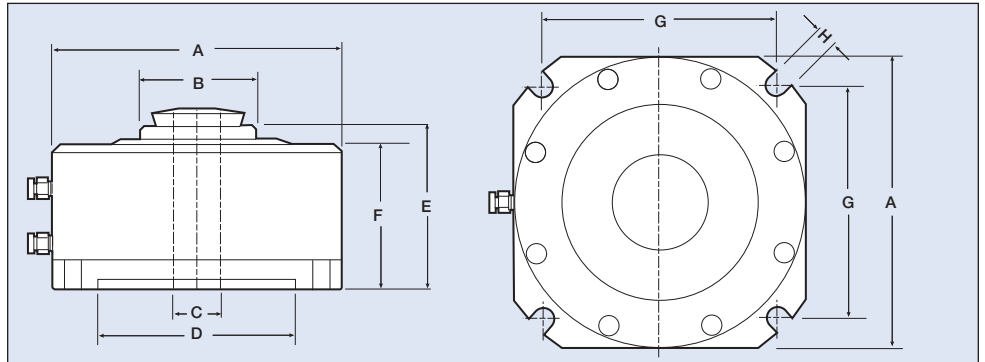


Atlas Air Powered 5C Stationary Dead Length Collet Chuck

Use for Pallets, Tombstones, Machining Centers, Standard Mills and Drill Presses: Series ATL225-5C

Collet Chuck Order No.
ATL225-5C

- ⊕ Powered By Air
- ⊕ Small Foot Print
- ⊕ Low Cost
- ⊕ Easily to Install
- ⊕ High Accuracy Less Than .001" TIR
- ⊕ Repeatability Plus Minus .00015"
- ⊕ Dead Length Design
- ⊕ For Best Accuracy Use High Quality Crawford Collets
- ⊕ Lever or Foot Pedal Actuated
- ⊕ Low Maintenance with Oil Mist Lubrication System
- ⊕ High Resistance to Coolant and Chip Penetration
- ⊕ Low Maintenance, Long Life



| Collet Chuck | ATL225-5C |
|--------------|---------------|
| A | 144mm (5.67") |
| B | 55mm (2.17") |
| C | 26mm (1.02") |
| D | 100mm (3.94") |
| E | 95mm (3.74") |
| F | 75mm (2.95") |
| G | 118mm (4.65") |
| H | 8.5mm (0.33") |

| Specifications | ATL225-5C |
|------------------|-------------------------------------|
| Collet Type | 5C Collets |
| Air Pressure | 3-8 kg/cm ² (42-114 psi) |
| Through Hole Dia | 26mm (1.02") |
| Chuck Weight | 9.4kg (20.7lbs) |
| Grip Force | 13,000 lbs @ 100 PSI |